

Second Grade Summer Reading Assignment

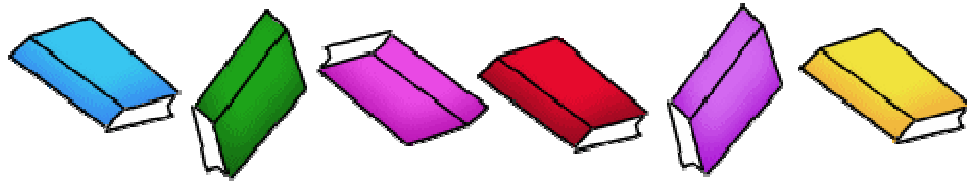
Directions: Please choose **two** fiction books and **two** non-fiction books from the list below. You will read a total of four books. After reading a fiction book, please have your student complete the character chart (attached). After reading a non-fiction book, please have your student complete a fact finding sheet (attached). **Your student will complete four sheets total.** These assignments will be due the first week of school and will be graded according to the attached rubric.

Fiction Book List (2 Books)

Any book from The Magic Tree House Series

Any book from The Jig-Saw Jones Series

Any book from The Horrible Harry Series



Non-Fiction Book List (2 Books)

Any non-fiction text that is about one of the following topics:

- Magnets
- Simple Machines
- Life Cycle
- Water Cycle
- Nutrition
- Digestive System
- Insects

Each book may be on a different topic.

Name: _____

Date: _____

CHARACTER CHART

Choose a character from the book. Then complete the chart.

Name of the book and author:

Character's Name:

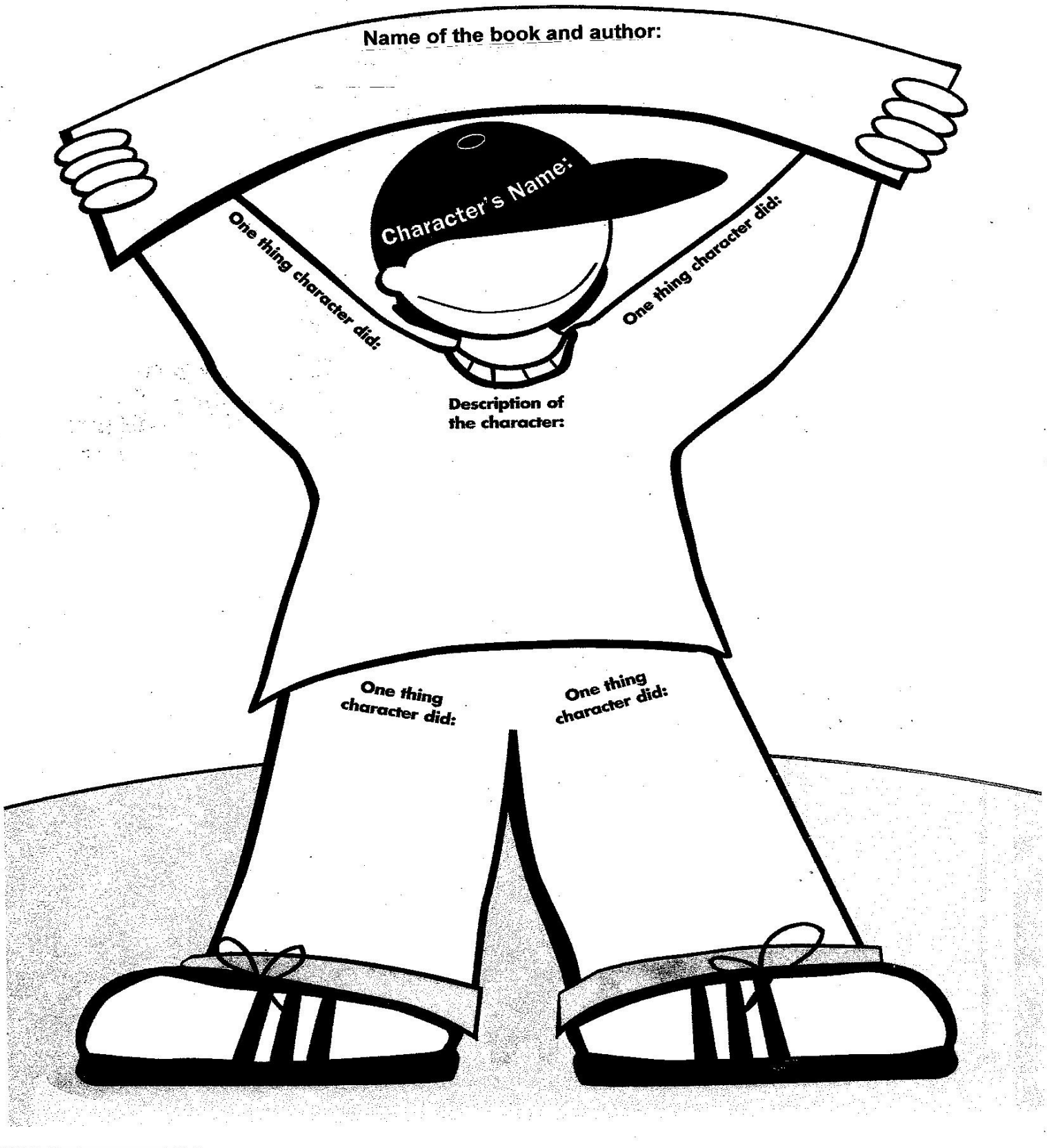
One thing character did:

One thing character did:

Description of the character:

One thing character did:

One thing character did:



Name of the book: _____

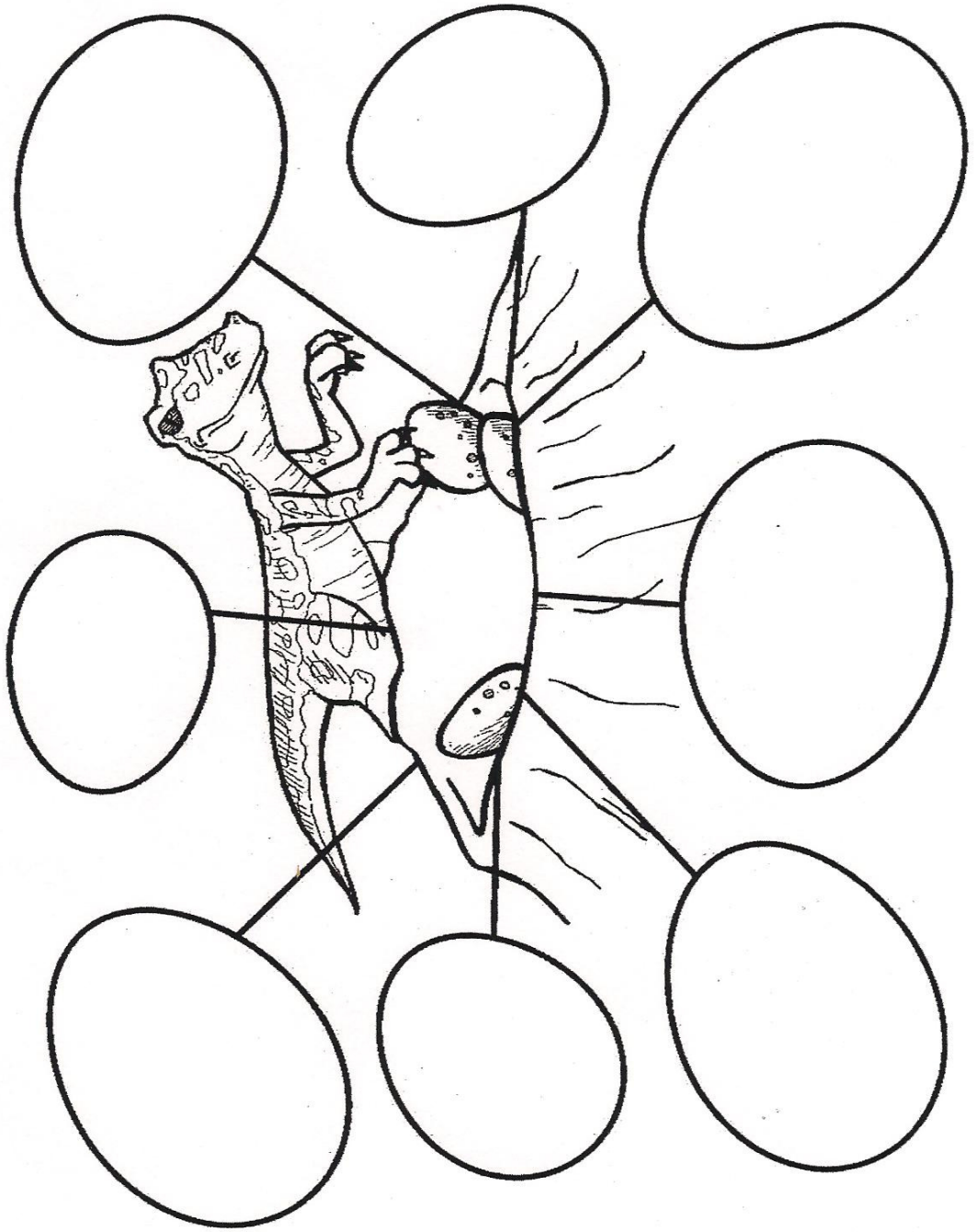
Author: _____

Name _____

Fact Finding

Directions: Please find (8) facts and write one in each egg below.

Definition of a fact: A fact is real and you can prove it.



2nd Grade Summer Reading Grading Rubric

TARGET	0	1	2	3	4
Completed graphic organizer for Non-fiction book #1					
Completed graphic organizer for Non-fiction book #2					
Completed graphic organizer for Fiction book #1					
Completed graphic organizer for Fiction book #2					

Write the expectation under “target”. In the grid, write brief summaries to indicate what measure of accomplishment would be equal to the corresponding point value.

- 0 = did not achieve target
- 1 = tried, but did not achieve target
- 2 = achieved some part of target
- 3 = achieved most of target
- 4 = achieved all of target